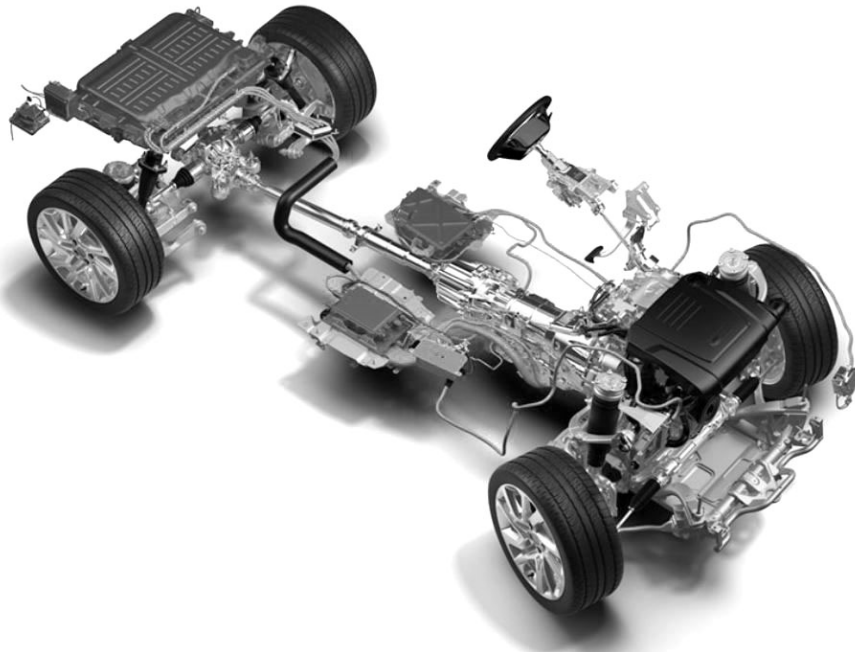


# 2019 Range Rover Sport PHEV Towing and Road Service Guide



Quality and Education Services  
AAA Automotive  
December 26, 2018

For the latest updates from AAA, visit:

**[AAAcampus.aaa.biz](http://AAAcampus.aaa.biz)**

## Index

Specifications	3
Start/Stop Switch	4
Electronic Key/Mechanical Key	4
Door Locks	5
Rear Hatch Release	5
Hood Release	5
Fuel Door Release	6
Electronic Parking Brake	6
Car Carrier Loading	7
Towing Eyebolt Locations	8
Tires and Jacking	9
Jump-Starting Procedures	10
Charging Procedures	11

### Important Notice:

**This publication should not be used while driving. The procedures in this publication should only be used by qualified and trained personnel.**

This Road Service Quick Reference Guide was developed to highlight some model-specific information and common procedures for servicing or towing this vehicle. It is not all-inclusive. For complete information: The applicable vehicle's owner's manual and the AAA/CAA Towing and Service Manual should be used in conjunction with this guide.

The procedures recommended and described in this guide are effective methods of performing light service and towing operations. Some of these procedures require the use of auxiliary equipment specially designed for the purpose. The auxiliary equipment should be used as recommended and whenever the trained operator deems it appropriate. It is important to read the various WARNINGS, CAUTIONS and NOTES in this manual in order to minimize the risk of personal injury to service personnel and or customers and to avoid procedures which may damage the vehicle or render it unsafe. It is also important to understand that these warnings, cautions and notes are not exhaustive. Neither AAA nor the auto and towing equipment manufacturers could possibly know, evaluate and advise the reader of all conceivable methods of towing or evaluate individual situations. Accordingly, anyone who uses a towing procedure must be thoroughly convinced that neither personal safety nor vehicle safety will be jeopardized by the selected procedure.

AAA is not responsible for changes made by the manufacturers to the vehicles or their recommendations. Important changes in procedures and updates will be furnished to all manual users at [AAACampus.aaa.biz](mailto:AAACampus.aaa.biz).

To contact us regarding feedback on this publication, email us at [TTR@national.aaa.com](mailto:TTR@national.aaa.com) or write us at:

AAA  
Attention: TTR  
1000 AAA Drive, MS33  
Heathrow, FL 32746

## AAA Towing and Road Service Guide for 2019 Range Rover Sport PHEV

### SPECIFICATIONS:

#### Dimensions:



Specifications	
Curb Weight (pounds)	5,430
Drive Line Type	All-Wheel Drive (AWD)
Length	192.2 inches
Width	87.4 inches
Wheelbase	115.1 inches
Height	71.6 inches
Fuel Type	Gas (Octane 87 or higher / Battery Electric)

Engines Available based on submodels	
Range Rover Sport	Available Engine
Plug-in Hybrid Electric Vehicle (PHEV)	2.0L 247 HP Turbocharged 4-cylinder Gasoline

## START/STOP (IGNITION) BUTTON OPERATION:

**NOTE:** The electronic key must be in the vehicle.

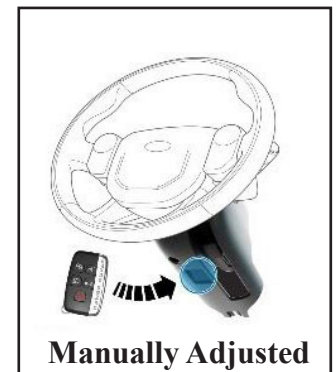
- **Ignition On / Engine Off:** With your foot off the brake pedal, press and hold the Start/Stop switch until the warning lights on the instrument panel illuminate.
- **To start the engine:** Press the Start/Stop switch while depressing the brake pedal.

**NOTE:** It is not possible to start a PHEV if it is plugged into a charging point. Make sure the vehicle is unplugged prior to attempting to use the Start/Stop switch.



### When the electronic key is not detected:

1. Press the brake pedal.
2. Depending on the type of steering column present, touch the back of the electronic key to the designated area of the steering column. When the electronic key is detected, a buzzer sounds and the engine switch will turn to IGNITION ON mode.



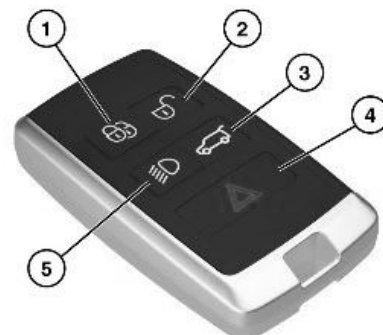
## ELECTRONIC KEY/MECHANICAL KEY:

To access the mechanical key, press the release button shown by the thumb on the remote in the image and slide the key out. The mechanical key can only be inserted in one direction, as the key has grooves on one side. If the key cannot be inserted in a lock cylinder, turn it over and re-attempt to insert it. After using the mechanical key, store it in the electronic key.



### Remote Functions (Top-Bottom)

1. Locks the doors
2. Unlocks the doors
3. Rear Hatch (press and hold)
4. Sounds the alarm
5. Turns on Headlights for 30 seconds



## DOOR LOCKS:

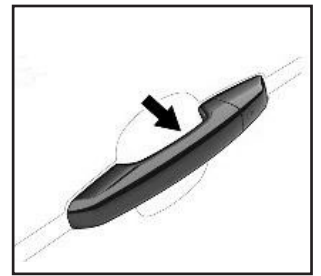
### Using the Remote:

1. Press buttons to lock and unlock the door.
2. Press the button on the inner handle to lock and unlock the door.

**NOTE:** The electronic key needs to be with the person attempting to lock or unlock the door so the key can be recognized.

### Using the Mechanical Key:

1. If the smart key and keyless entry fail to open the vehicle, insert the key blade into the lock barrel behind the driver's door handle. To access the lock barrel, remove the cover using the mechanical key in the slot provided by lifting the cover away from the door (shown in Step 1 image). Use care to avoid scratching painted surfaces.
2. Unlock the door by turning the key.



**Step  
1**



**Step  
2**

## REAR HATCH RELEASE:

### Remote:

- Press and hold button 3 in image A till the tailgate begins to open.

### External Button:

- With the electronic key within range (9 ft.), open the tailgate by pressing button 1 in image B.



**Image  
A**

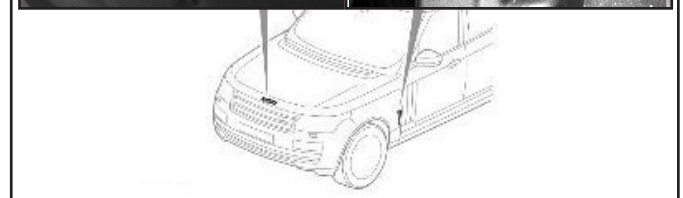


**Image  
B**

## HOOD RELEASE:

### Opening the Hood:

1. This vehicle is equipped with a mechanical hood release on the driver's side kick panel.
2. Slide the hood safety catch, located below the center point of the hood to the passenger side.
3. Raise the hood.

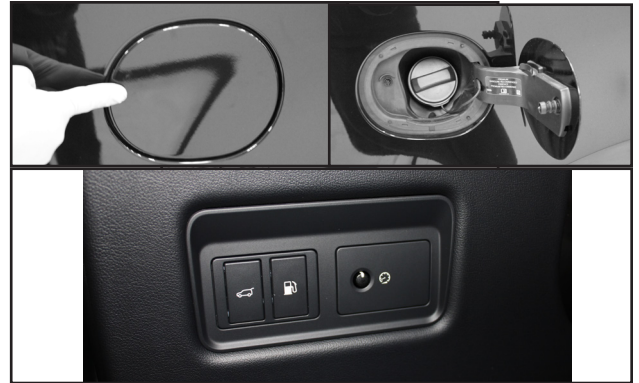




## FUEL DOOR RELEASE:

This vehicle is equipped with a push-lock fuel door. To open the fuel door, push the left side of the door to release the lock and pull the door open. After fueling, close the door and push it in to lock the door.

**NOTE:** Prior to opening the fuel door: The manufacturer has included a fuel button on the left-lower dash that locks the fuel door and allows the vehicle to vent prior to being opened.



## SELECTING NUTRAL:

### If the vehicle can be started normally:

To select Nutral, secure the vehicle, power vehicle to "ON," press the brake pedal, squeeze the trigger (shown in lower image) and slide the gear selector to "N." With the vehicle in neutral, press and hold start/stop button.

### If the vehicle has power, but will not start:

With your foot off the brake pedal, push the Start/Stop button once. (the engine will be off, and the shift position can be changed to Nutral.)

### Shift Override:

This vehicle is equipped with a shift override procedure that will place the transmission in Nutral. To access the override, remove the engine cover by lifting it up. Locate the override near the oil fill cap. Lift the lever up 90 degrees until it locks in the vertical position.

**NOTE:** Secure vehicle with wheel chocks prior to placing the vehicle in Nutral.

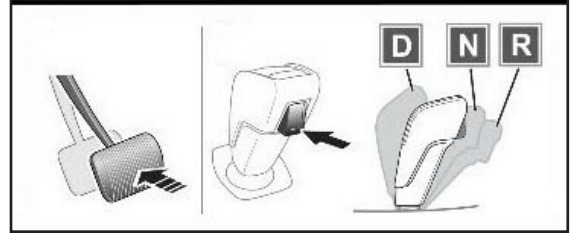
## ELECTRONIC PARKING BRAKE:

This vehicle is equipped with an electric parking brake. The system uses a switch located at the base of the center console near the gear selector. This applies and releases the parking brake.

1. Pull the switch up to apply the parking brake. The parking brake indicator light will turn on.
2. Push down on the switch to release the parking brake. The parking brake indicator light will turn off.

### Selecting Park:

Press the "P" located on top of the gear selector.



## **CAR CARRIER LOADING AND TRANSPORTING:**

### **Special Precautions:**

- Car carrier equipment is the preferred method of towing this vehicle.
- When loading or winching, DO NOT USE HOOKS OF ANY TYPE ON THE LOWER CONTROL ARMS OR ANY OTHER STEERING OR SUSPENSION COMPONENT. Carefully follow the loading procedures specified on the following pages.
- USE ONLY WHEEL STRAP TIE-DOWNS to secure this vehicle when transporting. The use of chains or hooks will damage under-vehicle components.
- To have steering capabilities, power to this vehicle is required and the vehicle needs to be in the "ON" setting.
- In an emergency situation where the vehicle will not roll or must be moved for towing access, wheel-jacking equipment, such as GoJaks or tire skates, are recommended.
- If the vehicle's electronics are operational, the air suspension must be set to "Access Height," before securing. Failure to do so can result in damage to the vehicle.
- Utilize as much ramping as required to reduce the approach angle and retain adequate ground clearance at the front and rear of the vehicle.

## **CAR CARRIER LOADING PROCEDURE:**

### **Tie-down Method:**

- When the vehicle is in its loaded position on the flatbed and the deck of the car carrier is still in the deployed position, secure the vehicle with a wheel chock to prevent it from rolling and attach the first wheel strap over the tire closest to you. Continue securing the vehicle on all four corners.
- Once the bed is in its transport position and the vehicle is secured to the bed with four wheel strap tie-downs, place the transmission into **P**ark and ensure the parking brake is set to help secure the vehicle.
- Clearance around the wheel is limited and careful routing of straps is needed to avoid contacting brake lines and wheel speed sensor wires, especially behind the front wheels. Careful routing of the straps is also important to avoid contact with the painted surfaces of the vehicle.
- After securing, slacken the winch line slightly to prevent any downward pull on the towing eyebolt. This will help to prevent damage if bumps are encountered during transport. Ensure the Start/Stop button is OFF and the electronic key is removed from the vehicle.

## CAR CARRIER LOADING PROCEDURE:

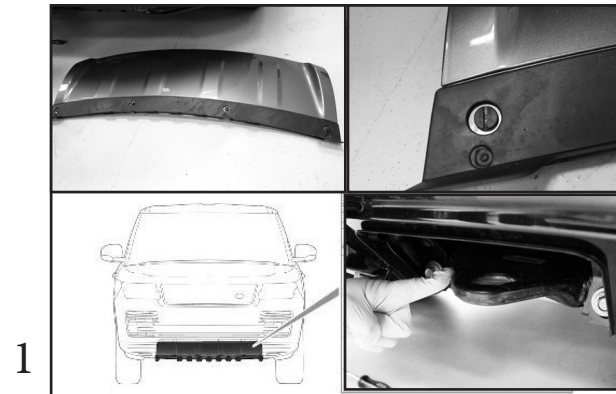
### Car Carrier Loading Procedures:

- Before loading, secure the vehicle, ensure the transmission is in Neutral and the parking brake is released.

#### Front Attachment Location: (image 1)

This vehicle is equipped with a towing eye that should be used for loading and unloading. It is located under a plastic cover in the center of the lower-front bumper.

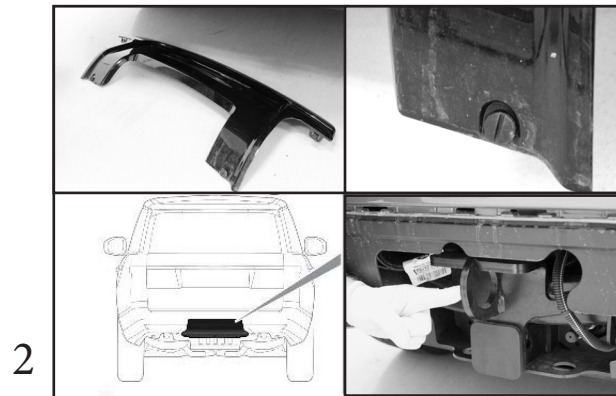
1. Unscrew the four fasteners counter-clockwise with a non-marring tool to release the rear lower edge.
2. Starting at one end, pull the cover forward from the rear lower edge to release the locating tabs and clips on the top edge of the cover.



#### Rear Attachment Location: (image 2)

This vehicle is equipped with a towing eye behind a removable plastic cover under the rear bumper.

1. Unscrew the two fasteners counter-clockwise with a non-marring tool to release the lower edge.
2. Starting at one end, pull the cover forward from the rear lower edge to release the locating tabs and clips on the top edge of the cover.



#### Rear Towing Eyebolt: (image 3)

Vehicles not equipped with a receiver hitch may come equipped with a rear towing eyebolt. The eyebolt is stored in the rear compartment with the tire inflator kit.

**NOTE:** The eyebolt is designed for a straight pull within a 20 degree window. Only load the vehicle onto the carrier deck far enough to safely transport the vehicle. Stop loading when the winch line begins to pull downward. To prevent downward pull, keep the leading edge of the vehicle at least 2 feet from the winch drum (this will vary based on the towing equipment used).



#### SKATES: (image 4)

In the event Neutral cannot be selected or a failure with the parking brake mechanism causes the wheels not to roll, wheel dollies such as “GoJaks” or tire skates can be used under the non-rolling wheels to assist with loading the vehicle. Care must be taken when installing tire skates or GoJaks due to the limited clearance around the wheels and between the vehicle and the ground.





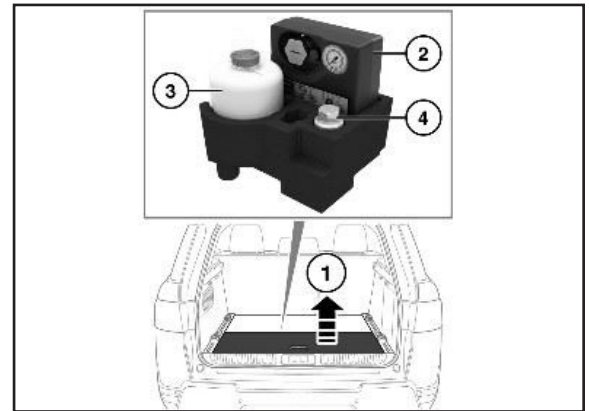
## TIRES AND JACKING:

This vehicle may come equipped with a tire inflator kit from the factory. These items can be found in the tool kit located inside the rear hatch.

### Inflator Kit:

1. Luggage compartment's floor panel.
2. Compressor
3. Sealant bottle
4. Locking wheel nut adaptor

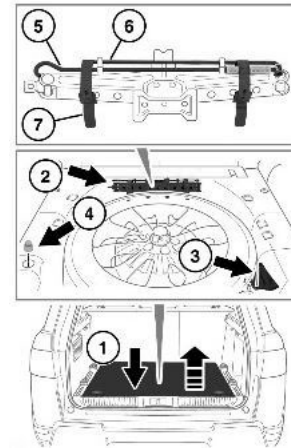
**NOTE:** Prior to using the inflator kit, make sure to get permission from the owner.



### Spare Tire and Tool Locations:

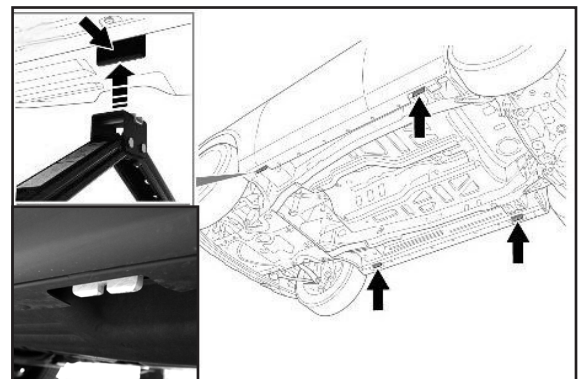
This vehicle may be equipped with a spare tire and tools located under the floor panel of the rear compartment.

1. Loadspace floor panel
2. Jack and tools: Located under the spare wheel
3. Spare wheel's lift assist tool
4. Locking wheel nut adaptor
5. Jack handle
6. Wrench tool
7. Jack strap



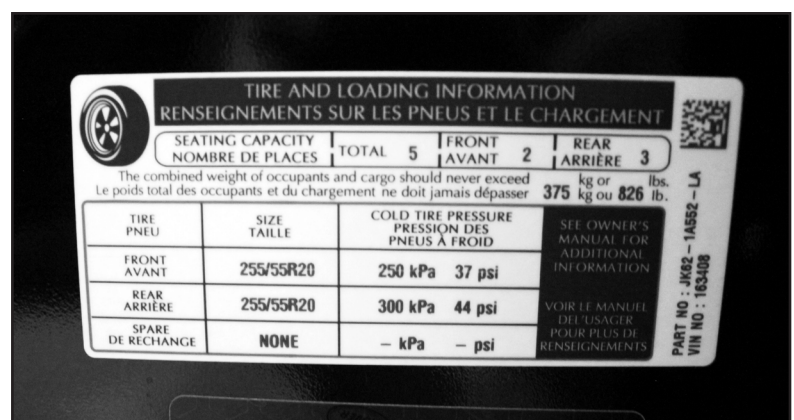
### Jacking Locations:

Place the jack in its proper location. Observe all standard jacking precautions and ensure the vehicle is on firm, level ground with the wheels chocked. As the jack comes in contact with the vehicle body, ensure it is contacting the correct location on the vehicle. Continue lifting the vehicle high enough to execute the services needed.



### Tire Pressure:

The manufacturer's recommended tire pressures can be found on the tire placard located on the driver's door pillar and in the owner's manual.



## JUMP-STARTING PROCEDURES:

The battery in this vehicle is an Absorbed Glass Matt (AGM ) located under the inflator kit in the luggage compartment.

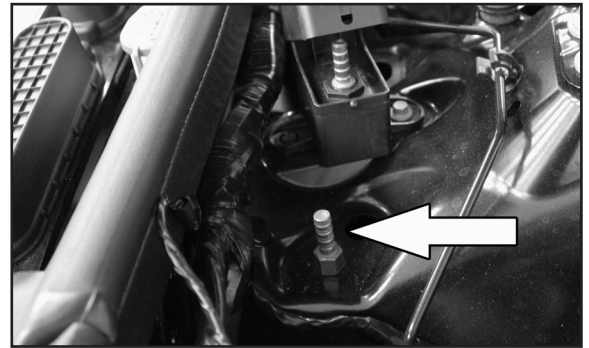
Follow the jump-starting procedures listed below:

- Follow all normal jump-starting precautions as outlined in the AAA/CAA Towing & Service Manual and the owner's manual.
- Secure the vehicle.
- Ensure the Start/Stop button and all electrical accessories are turned OFF and the electronic key is removed from the vehicle before connecting jumper cables or a jumper box to the discharged vehicle.
- Connect the (+) positive lead to the vehicle's positive boost terminal on the passenger's side (figure 1).
- Connect the (-) negative jump lead to the vehicle's negative boost terminal (figure 2).
- Start the engine and allow it to idle (figure 3).
- Allow the discharged vehicle to charge a few minutes before disconnecting the jump leads.
- Disconnect in the reverse order.

1



2



3



**NOTE:** Manufacturer states the following effects can be expected if the battery gets disconnected or is severely discharged:

- Alarm may trigger, depending on its state when the battery is disconnected. If the alarm does sound, use the smart key, in the normal way, to disarm the security system.
- The windows may need recalibrating to operate correctly.

**TIP:** To help prevent these concerns, use a charged Keep Alive Memory (KAM) unit to provide power to the vehicle while the battery is disconnected. It is important to note that the memory may already be affected depending on the battery's charge before installing the KAM unit.

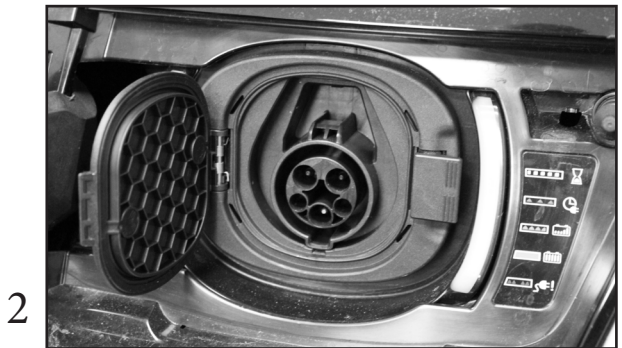
## CHARGING PROCEDURES:

The vehicle is equipped with a Plug-in Hybrid system that allows the electric batteries to be recharged.

The following lists the specifics of this system:

- Follow all precautions as outlined in the AAA/CAA Towing & Service Manual and the owner's manual when working with any High-Voltage equipped vehicles.
- The charging port is located behind the front grille (figure 1). With the vehicle unlocked, push the top right corner of the grille and pull it open to access the charging port cap. Once open, move the cap aside to gain access to the charging port (figure 2).
- Charging cable being used is required to meet the AC charging standard SAE J1772 (figure 3).
- **Connecting Charging Cable Procedure:**
  - Unlock the vehicle
  - Make sure **Park** is selected
  - Make sure the vehicle's ignition is switched off
  - Plug in the domestic connector to the electricity supply (Always connect the cable completely stretched out to the electric supply first)
  - Open the charging port and remove the cap
  - Connect the charging cable to the charge port
  - The LEDs on either side of the charge port will flash white to confirm that vehicle charging has been initialized
- **Disconnecting the Charging Cable Procedure:**
  - Unlock Vehicle, verify the vehicle is in **Park**, and the ignition is switched off
  - Press the release button on the cable, if equipped, and disconnect the charging cable from the vehicle (*Always disconnect from the vehicle first*)
  - Place the cover on the charge port
  - Unplug the charge cable from the electric source
- **Charging Cable Emergency Release** is located under the hood above the charge port (figure 4).

**NOTE:** Manufacturer states this vehicle supports AC charging only.



**For the latest updates from AAA, visit: [AAAcampus.aaa.biz](http://AAAcampus.aaa.biz)**